



# CDPH ENVIRONMENTAL INITIATIVES Board of Health Briefing

Megan Cunningham, Managing Deputy Commissioner  
Dave Graham, Director of Environmental, Health & Safety Compliance

June 21, 2023

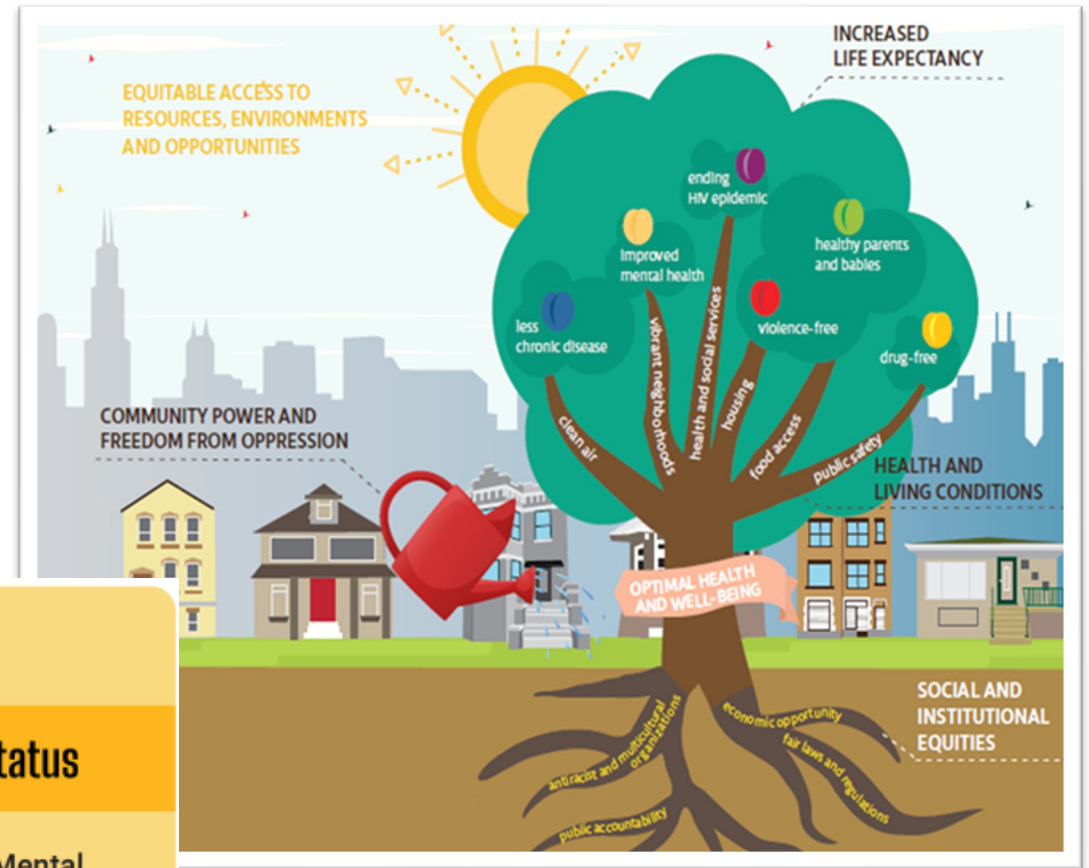
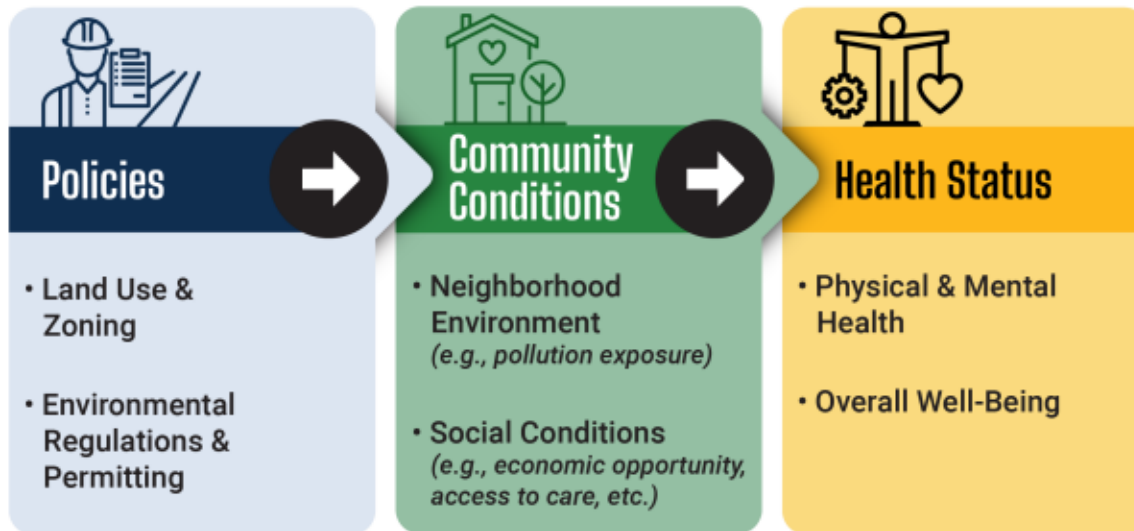


# AGENDA

- **Introductions**
- **CDPH's Environmental Health Initiatives**
  - Environmental Health Vision
  - CDPH Office of Environmental Permitting & Inspections
  - Data, Innovation & Policy
  - Environmental Justice Investments
  - What's Next?
- **Discussion**

# ★ HEALTHY CHICAGO 2025

Citywide plan to **close Chicago's racial life expectancy gap** by addressing the root causes of health, including the environment



# ★ WHAT WE DO

1. **Permit** facilities/activities with potential environmental impacts.
2. Conduct **inspections** and issue citations to enforce regulations.
3. Support collection of **hazardous waste** and **cleanup** of contaminated sites.
4. Develop **policies** to protect human health and the environment.
5. Analyze **data** to drive **innovation** in environmental health.

## OUR WORK BY THE NUMBERS

50+

STAFF MEMBERS

\$30 MILLION

INVESTED IN CDPH'S  
ENVIRONMENTAL JUSTICE  
INITIATIVES THROUGH THE  
CHICAGO RECOVERY PLAN

1,000+

PERMITS REVIEWED BY CDPH  
EACH YEAR

7-8,000

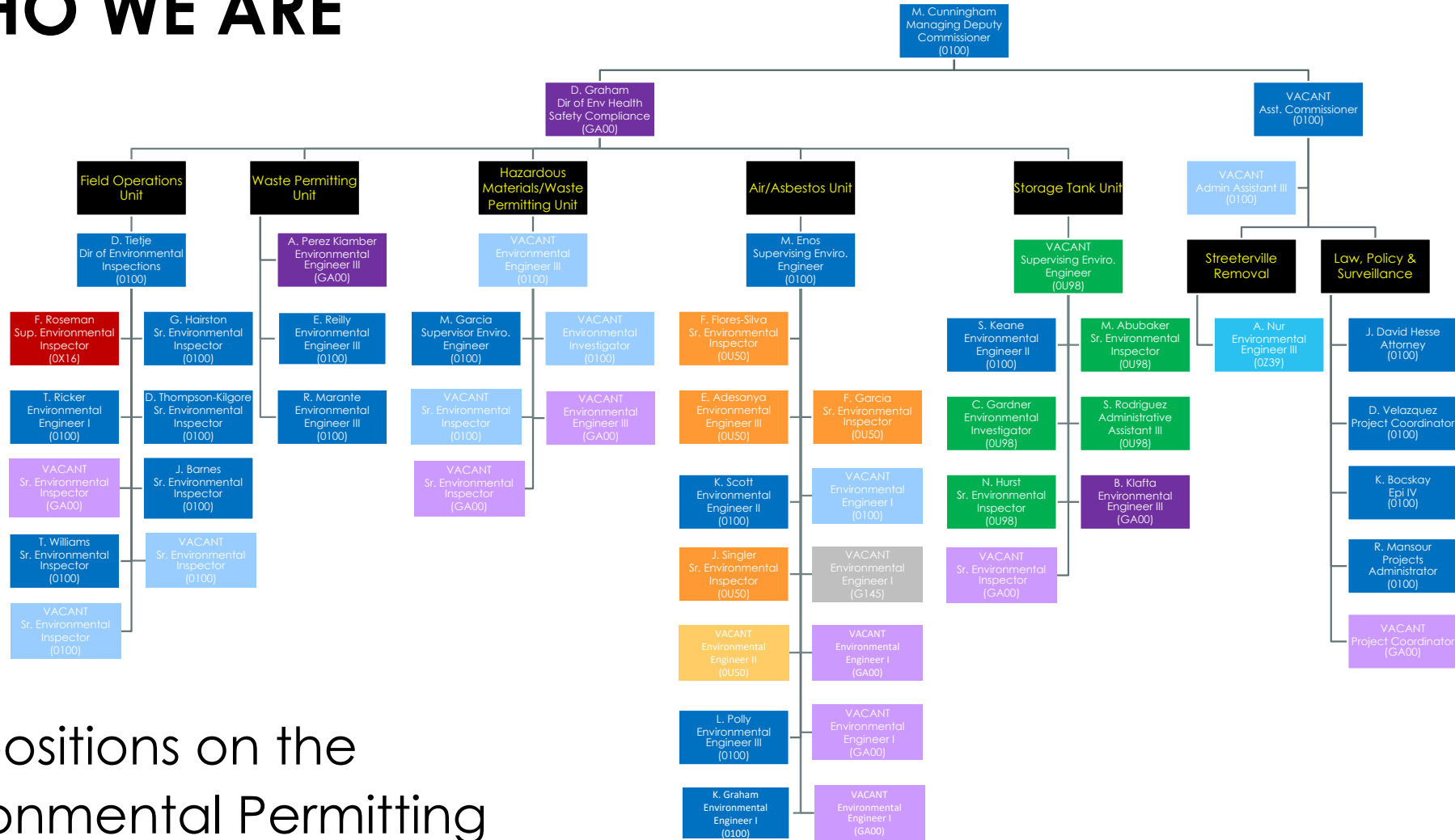
INSPECTIONS CONDUCTED  
BY CDPH EACH YEAR

500,000+

POUNDS OF E-WASTE &  
HAZARDOUS WASTE  
COLLECTED ANNUALLY



# WHO WE ARE



50 positions on the Environmental Permitting & Inspections team

# ★ PERMITTING: FACILITY TYPES



**Underground Storage Tanks**

**Solid Waste & Recycling Facilities**



**Industrial Facilities**

Plus, other commercial and institutional facilities that have the capacity to use or generate pollutants such as dry cleaners, motor vehicle repair shops, demolition and construction sites, etc.

# ★ PERMITTING AUTHORITIES & CDPH ROLE



- Issues permits for certain types of equipment and operations
- Only issued if zoning and environmental requirements are met
- CDPH can require special conditions
- The City's authority does not extend to mobile sources of pollution (i.e., freight); this is the purview of state/federal agencies

# INSPECTIONS

- **Routine monitoring** and inspections of permitted facilities to enforce environmental laws
- Response to **community complaints** from the 3-1-1 system, such as:
  - Construction/demolition issues
  - Air pollution, odor and dust
  - Spills or dumping in waterways
  - Industrial equipment noise

**ENVIRONMENTAL COMPLAINT?  
REPORT IT TO 3-1-1.**



**CALL 3-1-1**



**311.CHICAGO.GOV**



**CHI311 APP**



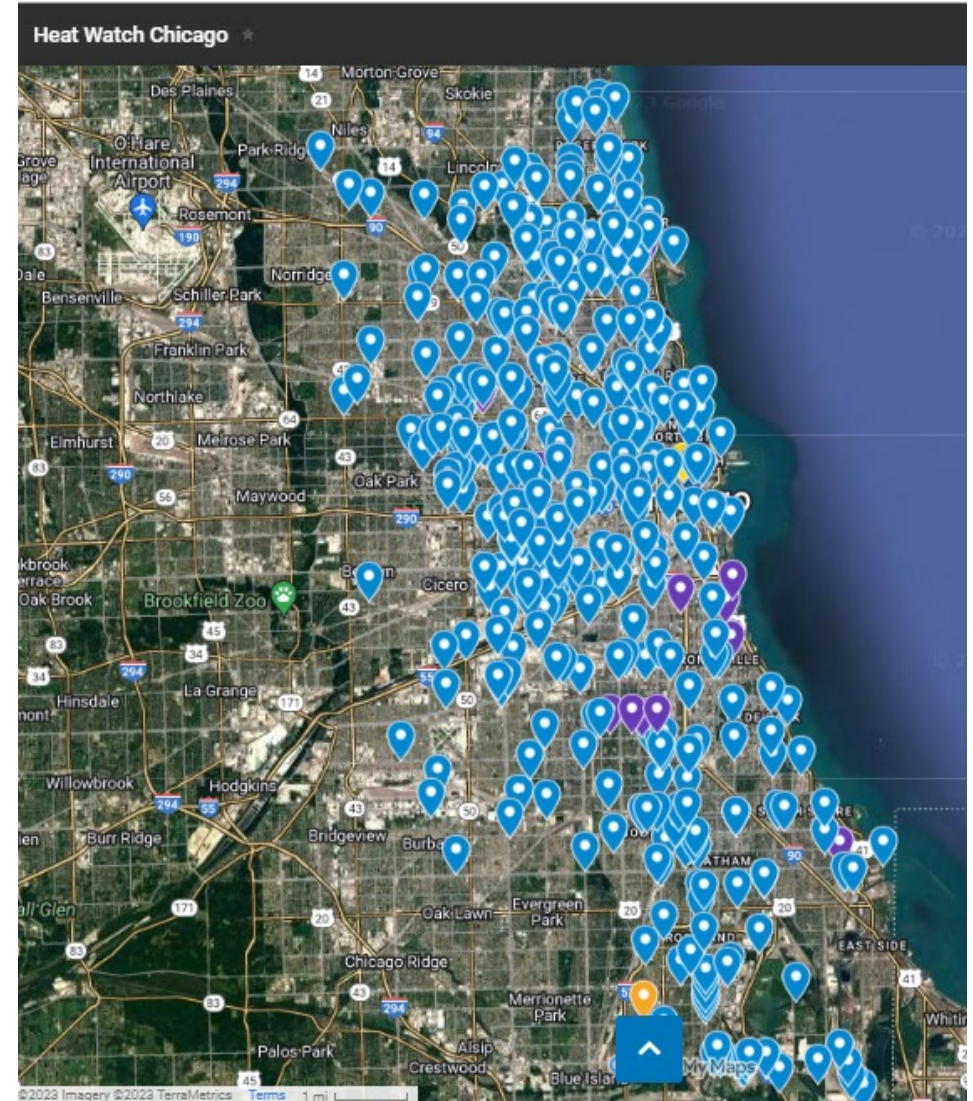
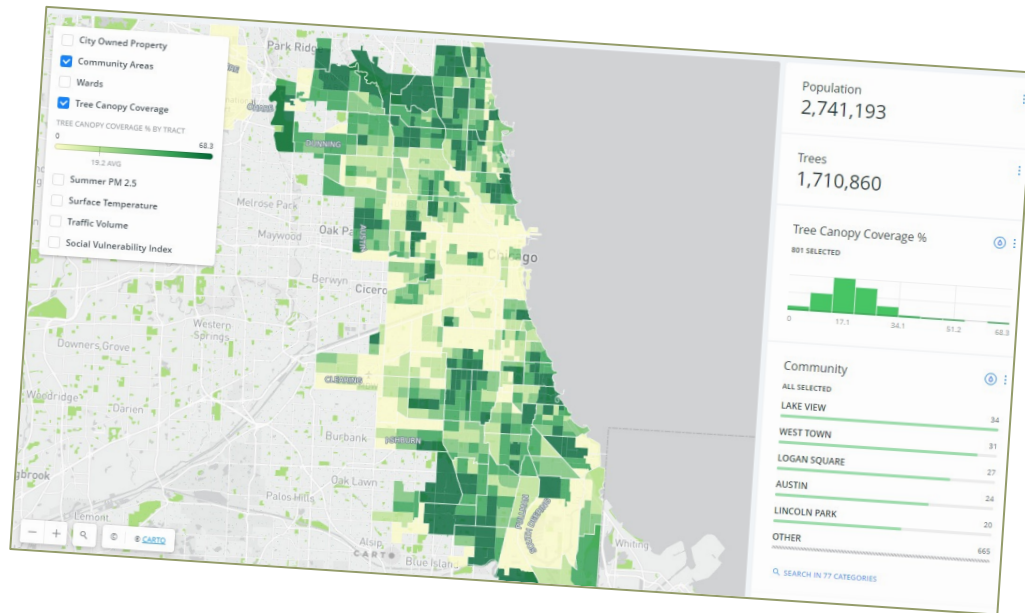
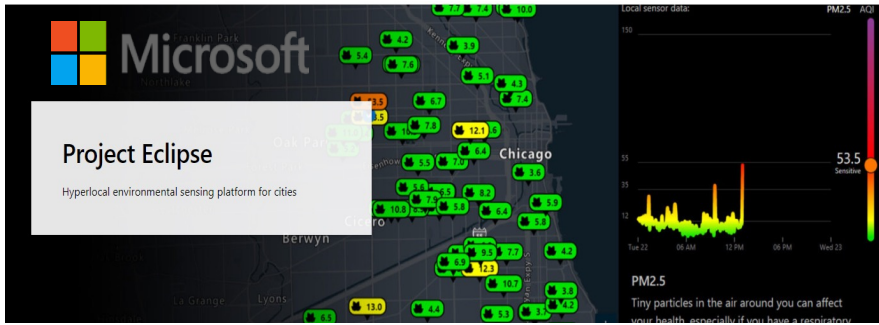


# ★ HAZARDOUS MATERIALS & WASTE



- **Household Chemical & Computer Recycling Facility**  
(1150 N. North Branch St.)
- **Hazardous waste response**
- **Remediation of polluted sites**

# ★ DATA & INNOVATION



# POLICIES

**CITY OF CHICAGO  
RULES**

Control of Emissions from Handling  
and Storing Bulk Materials

Effective January 25, 2019



  
CHICAGO DEPARTMENT OF PUBLIC HEALTH

Mayor Rahm Emanuel    Commissioner Julie Morita, M.D.

**CITY OF CHICAGO  
RULES**

Rules for Large Recycling Facilities

Effective June 5, 2020



  
CHICAGO DEPARTMENT OF PUBLIC HEALTH

Mayor Lori E. Lightfoot    Commissioner Allison Arwady, M.D.

**CITY OF CHICAGO  
RULES**


Rules for Reprocessable  
Construction/Demolition Material Facilities

Revised March 7, 2023



  
CHICAGO DEPARTMENT OF PUBLIC HEALTH

Mayor Lori E. Lightfoot    Commissioner Allison Arwady, M.D.

  
OFFICE OF THE MAYOR  
CITY OF CHICAGO

LORI E. LIGHTFOOT  
MAYOR

**EXECUTIVE ORDER NO. 2023-3**

**WHEREAS**, environmental justice is the principle that all people and communities are entitled to equal protection and equal enforcement of environmental laws and regulations and have a right to equitable treatment and meaningful involvement concerning the development, implementation, and enforcement of policies and regulations that can impact the environmental conditions of their communities; and

**WHEREAS**, in the 1960s, Civil Rights leaders brought attention to the public health risks associated with the unsafe environmental conditions especially affecting communities of color and low-income neighborhoods, laying the foundation for the environmental justice movement; and

**WHEREAS**, Chicago has a rich legacy of promoting environmental justice—from Hazel Johnson, who worked to improve living conditions in public housing, to the many community-based organizations that advocate to protect health and the environment in their neighborhoods; and

**WHEREAS**, environmental pollution is linked to certain chronic illnesses such as asthma and cancer, and chronic disease is the leading driver of Chicago’s ten-year life expectancy gap between Black and white residents and decreases in life expectancy in the Latino population; and

**WHEREAS**, a 2021 report by the United States Environmental Protection Agency (U.S. EPA) found that the impacts of climate change fall disproportionately on under-resourced communities, and many of these communities lack the resources to prepare for extreme weather conditions; and

**WHEREAS**, Section 2 of Article XI of the Constitution of the State of Illinois provides that “[e]ach person has the right to a healthful environment;” and

**WHEREAS**, the City in 2022 codified both an Office of Climate and Environmental Equity and an Office of Equity and Racial Justice, signifying the City’s commitment to

# ★ ENVIRONMENTAL JUSTICE (EJ) COMMITMENT



- Expand opportunities for **public engagement**; listen to community voice and lived experiences.
- Advance **health equity in all policies** with City departments.
- Coordinate with Illinois and U.S. Environmental Protection Agencies on **strengthened policies and targeted enforcement** efforts.
- Use **innovative data and assessments** to improve our understanding of how our local environment affects health.



# WHAT'S NEXT? EJ Investments

With American Rescue Plan (ARP) and bond funding, CDPH is investing **\$30 million** in new environmental justice initiatives, such as:

- Building internal capacity
- Expanded local air monitoring network, co-managed with community
- Remediation of polluted sites in overburdened communities (Schroud)
- Cumulative impact assessment

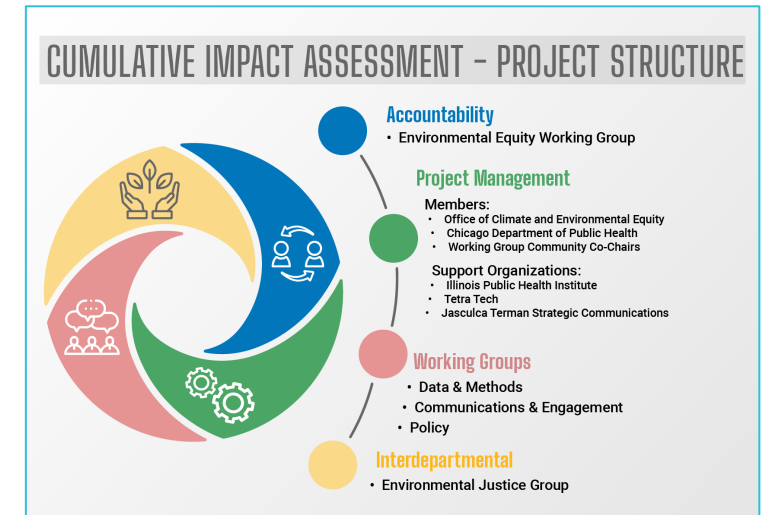




# WHAT'S NEXT?

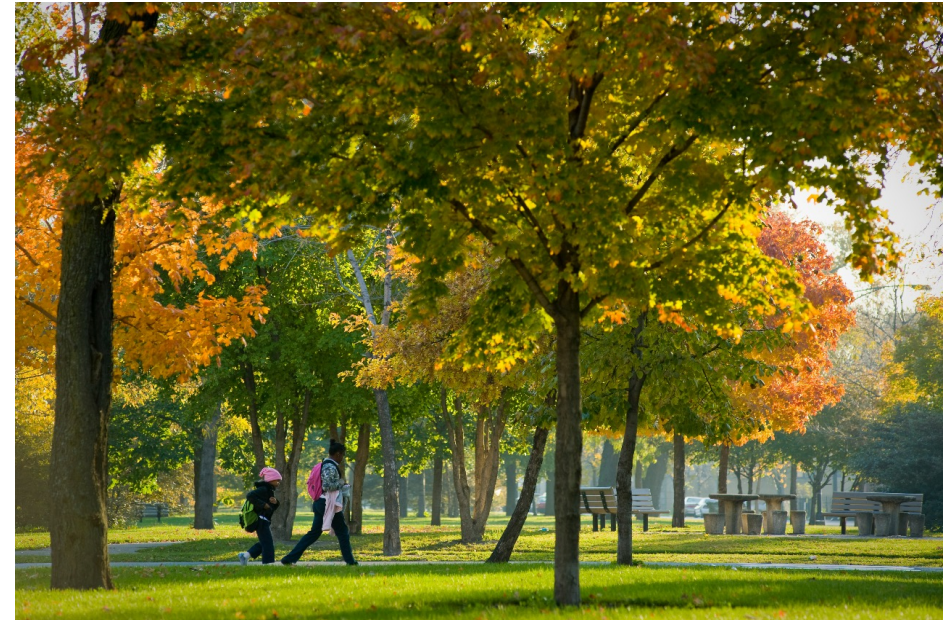
## Cumulative Impact Assessment & Policy

- Chicago's Cumulative Impact Assessment will provide data on **how environmental burdens and other stressors vary** across Chicago.
- This will help us identify neighborhoods that experience the greatest cumulative impacts and inform decision-making around both **policies** and **targeted investments** the City should make.
- Learn more at [Chicago.gov/cumulativeimpact](https://chicago.gov/cumulativeimpact).



# ★ HEiAP Team and Community Leaders' Support

- Chicago's Cumulative Impact Assessment has been **community co-led** and **co-designed**
  - Each working group is **co-chaired by community leaders** from the Environmental Equity Working Group (EEWG) and CDPH staff members
- CDPH's **Health Equity in All Policies (HEiAP) team** co-leads the CIA work and supports other EJ policy projects by providing technical assistance in capacity- and relationship-building to embed equity into the process and support the Healthy Chicago movement





# WHAT'S NEXT? CDPH EJ Action Plan

- Enforcement in EJ Areas
- Emissions Inventory
- Realtime Air Modeling
- Environmental Dashboard
- Environmentally Complex Demolitions
- Permit Conditions
- Strengthened Industry Rules
- Transparent Complaint Tracking
- Expanded Community Engagement

## CHICAGO CUMULATIVE IMPACT ASSESSMENT

### COMMUNITY INPUT SUMMARY – KEY FINDINGS

The City of Chicago and community partners are working on the first city-wide Cumulative Impact Assessment to describe how environmental, health and social stressors affect our communities, and to identify neighborhoods that experience the greatest impacts.

As a starting point, environmental justice leaders and advocates called upon the City to review input already provided by people living in community areas most affected by industrial development - primarily lower-income, Black and Latinx neighborhoods on the South and West sides of Chicago. For years, community members have provided comments on permitting and zoning decisions, regulations, and City plans. We analyzed this qualitative data to better understand the lived experience of cumulative impacts and described our findings in the Community Input Summary. Here are some key take-aways we received from advocates and the community that will shape how we approach the Cumulative Impact Assessment and the recommendations that follow from it.

#### THEME 1: ENVIRONMENTAL JUSTICE FOCUS AREAS



- Disproportionate impact of pollution on South and West sides of Chicago
- Polluting industries continue to move from white neighborhoods to overburdened Black and Latinx communities
- Normalization of pollution in overburdened communities
- Isolation from other neighborhoods
- Environmental hazards due to air and water pollution

#### THEME 2: ENVIRONMENTAL HEALTH OUTCOMES ASSOCIATED WITH POLLUTION EXPOSURE



- Asthma and respiratory concerns
- Cancer
- Mental health impacts
- Hidden toxins, odors and difficulty identifying source of health concerns
- Obstacles to health-promoting behaviors, impacting community longevity

#### THEME 3: SOCIO-ECONOMIC IMPACT ASSOCIATED WITH POLLUTING FACILITIES



- Questioning of burdens and benefits of polluting industries
- Lack of industrial economic benefits, relative to costs
- Lack of investment or reinvestment in overburdened communities
- Perception of a neighborhood being used as the City's dumpsite
- Corporate influence valued over neighborhood voice





# WHAT'S NEXT? Expanded Community Engagement

- Launched [Chicago.gov/envcommunityinfo](http://Chicago.gov/envcommunityinfo), where community members can get updates and **register for environmental news**.
- Developed new **outreach and education materials**.
- Strengthened engagement **process for consequential facilities**.

**ENVIRONMENTAL COMPLAINT? REPORT IT TO 3-1-1.**

CALL 3-1-1 VISIT 311.CHICAGO.GOV CH311 MOBILE APP

The Chicago Department of Public Health's (CDPH) environmental inspectors protect public health and the environment by addressing air, water and land threats throughout the city. Staff in this program respond to complaints, inspect sites and facilities and enforce environmental laws.

You can submit a complaint to CDPH by calling 3-1-1, using the CH311 mobile app or online at 311.chicago.gov. Please provide as much detail as possible so CDPH can send the appropriate inspector and respond thoroughly. Below are some helpful tips and questions you can ask yourself when submitting a complaint to 3-1-1.

**WHAT**

- Did you see something (e.g. dust or dumped materials)?
- Do you smell anything (e.g. gasoline, smoke or chemical odor)?
- Did you hear something (e.g. business mechanical equipment)?

**WHERE**

- Describe where the issue is occurring.
- Is the issue on your property or someone else's?
- If you saw something, what direction was it coming from?

**WHO**

- Do you know who or what is causing the issue?
- Is there a specific facility or business involved? (e.g. company names or trucks or equipment)
- Are there other residents affected by this issue?

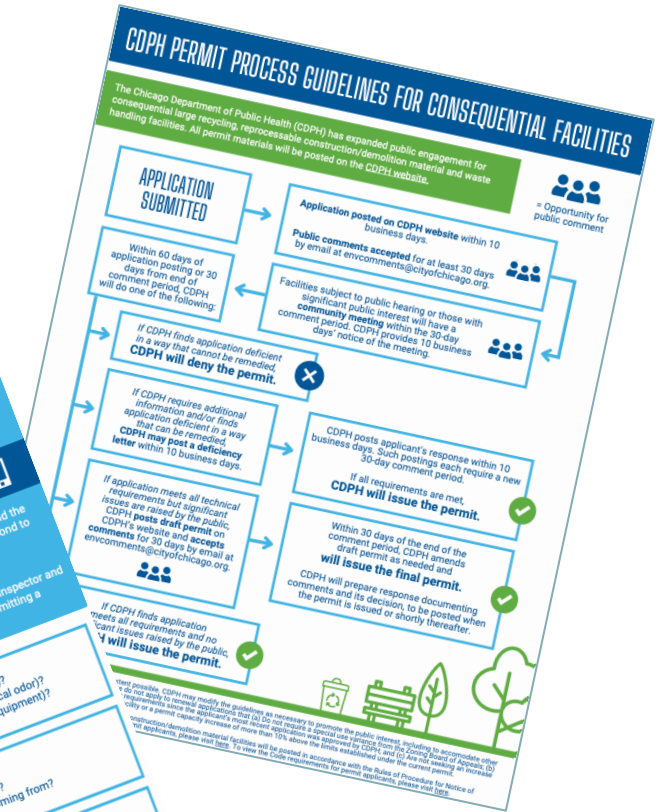
**WHY**

- Why is this issue a concern?
- How is the issue affecting you?
- If you feel this is a dangerous or unsafe situation, call 9-1-1.

**YOU**

If you are comfortable doing so, please provide the information below in case an inspector has questions, although not required.

- Your name, phone number or email, and address (if occurring on your property)





**Q&A**