



# Chicago Fire Performance Centre Proposed Development

DPD/28<sup>th</sup> Ward Community Meeting  
August 25<sup>th</sup>, 2022

# Agenda

1. Introductions
2. Alderman Ervin & CHA Intro Statements
3. Site Background
4. Project Presentation
5. Question & Answer Session
6. Next Steps

# Meeting Decorum



1. Please use the **Q&A or CHAT function** for any questions
2. The moderator will work to take questions in the order they come in; questions that have already been addressed will be cleared
3. Please keep questions/comments relevant to the subject material
4. All questions and ideas are valid
5. Respond with respect



# Alderman Ervin & CHA Statements



# Development Site Background

# Site Context



IMD

Jewel

24.2 acres

Brooks Homes

Fosco Park

Costco

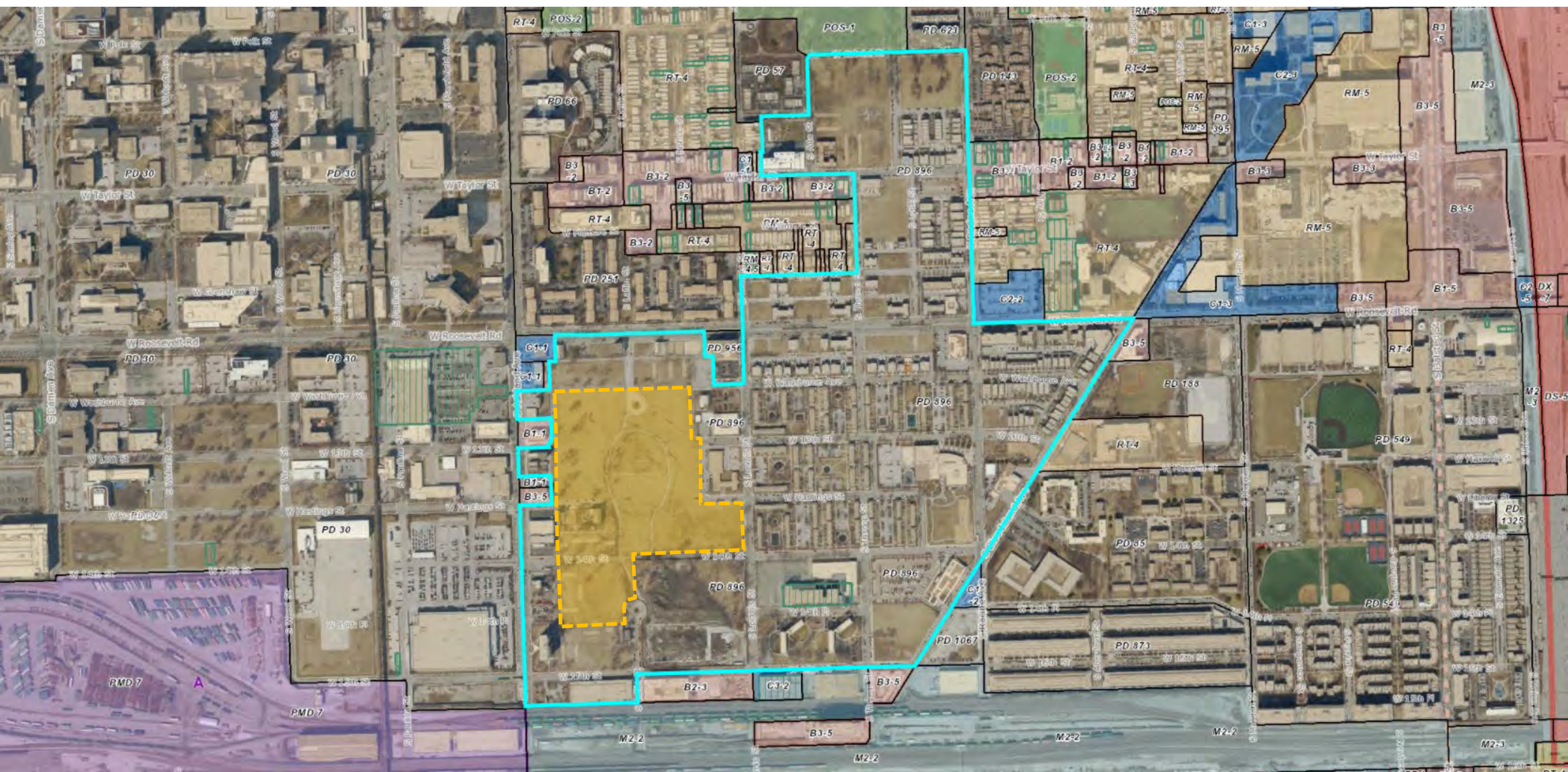
Addams Rec Ctr

Jones Senior Apts

Loomis Courts

UP Rail Yard

# Zoning Map – PD #896/Roosevelt Square



# Roosevelt Square Development



ABLA is an acronym for four housing developments that went up over a number of years between Cabrini and 15th Streets, and from Ashland and Blue Island Avenues. The Jane Adams Homes were built in 1938; Brooks Homes, in 1943; Loomis Homes, in 1951; and the 15-story Abbott Apartments, in 1955. An extension to Brooks Homes was built in 1963.

- 3,600 Units
- 8,500 Residents
- 94 Acres of Land
- Demolished 2002 - 2007



A combination of CHA, affordable and market-rate units are planned for the redevelopment area.

CHA has partnered with Related Midwest as the master developer





# Chicago Fire Proposed Development

# CHICAGO FIRE FOOTBALL CLUB

The Chicago Fire Football Club was founded in 1997 on the 126th anniversary of the Great Chicago Fire and kicked off its 25th season in Major League Soccer in 2022. The Fire have won six major domestic championship titles, including the 1998 MLS Cup, the 1998, 2000, 2003 and 2006 Lamar Hunt U.S. Open Cups, as well as the 2003 Supporters' Shield. The Club's charitable arm, the Chicago Fire Foundation, was recognized as ESPN's 2019 Sports Humanitarian Team of the Year. The Fire plays their home matches at historic Soldier Field. For more information, visit [chicagofirefc.com](http://chicagofirefc.com).



# WHAT IS A PERFORMANCE CENTER?

## IS

A performance center is where a professional team prepares for matches.

- **PERFORMANCE:** Strength, conditioning exercises
- **RECOVERY:** Injury recovery and prevention
- **DEVELOPMENT:** Individual and team focused for youth players
- **GAME ANALYSIS:** Evaluation of individual and team performance

## IS NOT

A performance center would NOT be a venue for the professional team to participate in matches in front of a crowd.

- Professional home matches for Chicago Fire FC will continue to be hosted at Soldier Field
- Fans and outside visitors would **NOT** have unsolicited access to the facility



## WHY THE CITY?

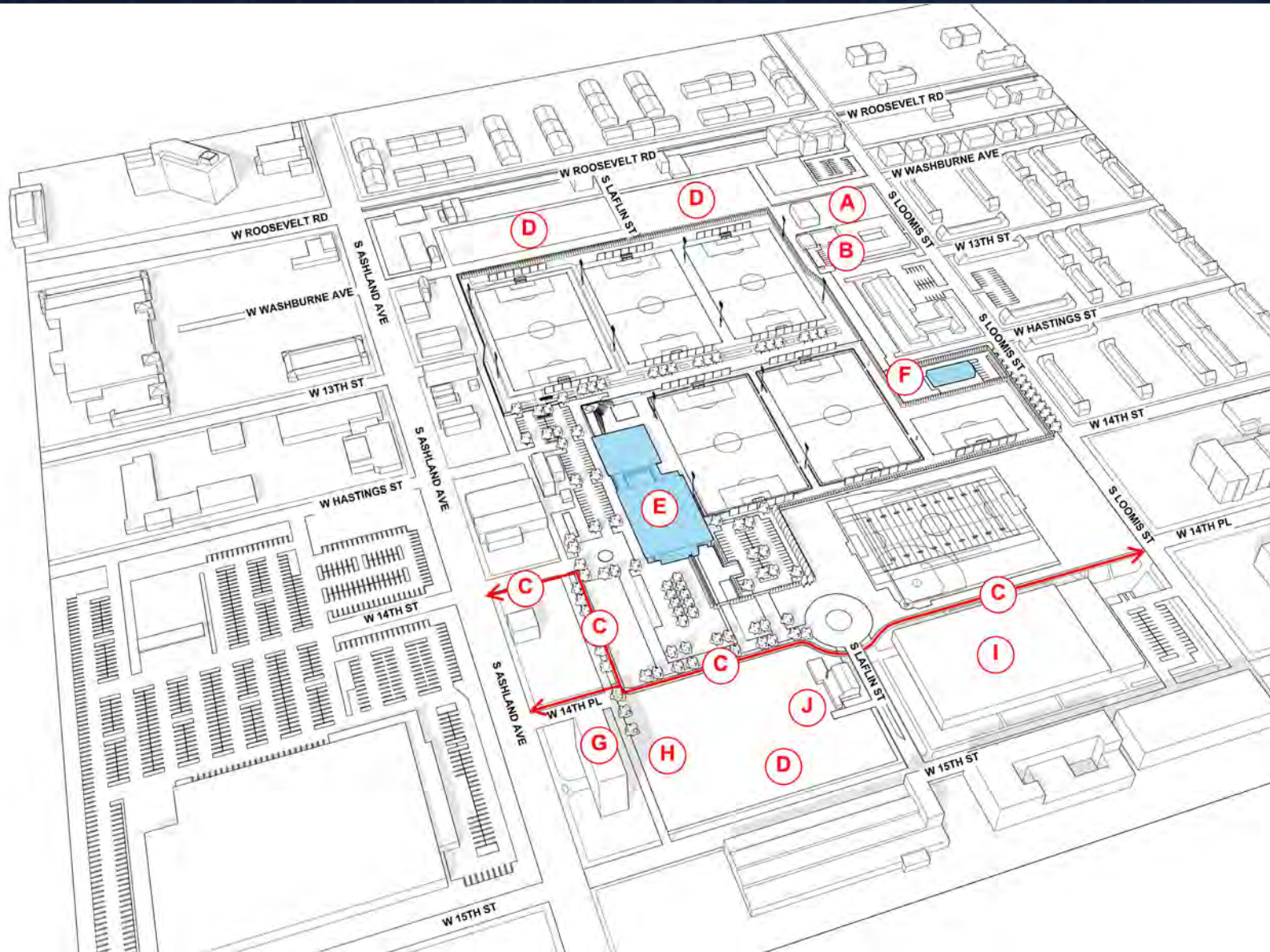


- The Chicago Fire Football Club is proud to call Chicago home and, as a club, we have always invested in our hometown.
- We are committed to making a difference in the lives of young people and communities through soccer. In neighborhoods across the city, soccer brings people together, fostering a strong sense of history and community while showing immense passion for the game.
- Since our founding, Chicago Fire FC has made significant contributions to enhance the quality of life throughout Chicagoland, investing more than \$1.8 million in community programs and initiatives.
- Having our Performance Center on the Near West Side would allow the Fire to have an even greater impact through increased free programming for children, new and improved facilities and amenities for the neighborhood, and a long-term partnership between local residents and the Club.



# SITE BOUNDARY





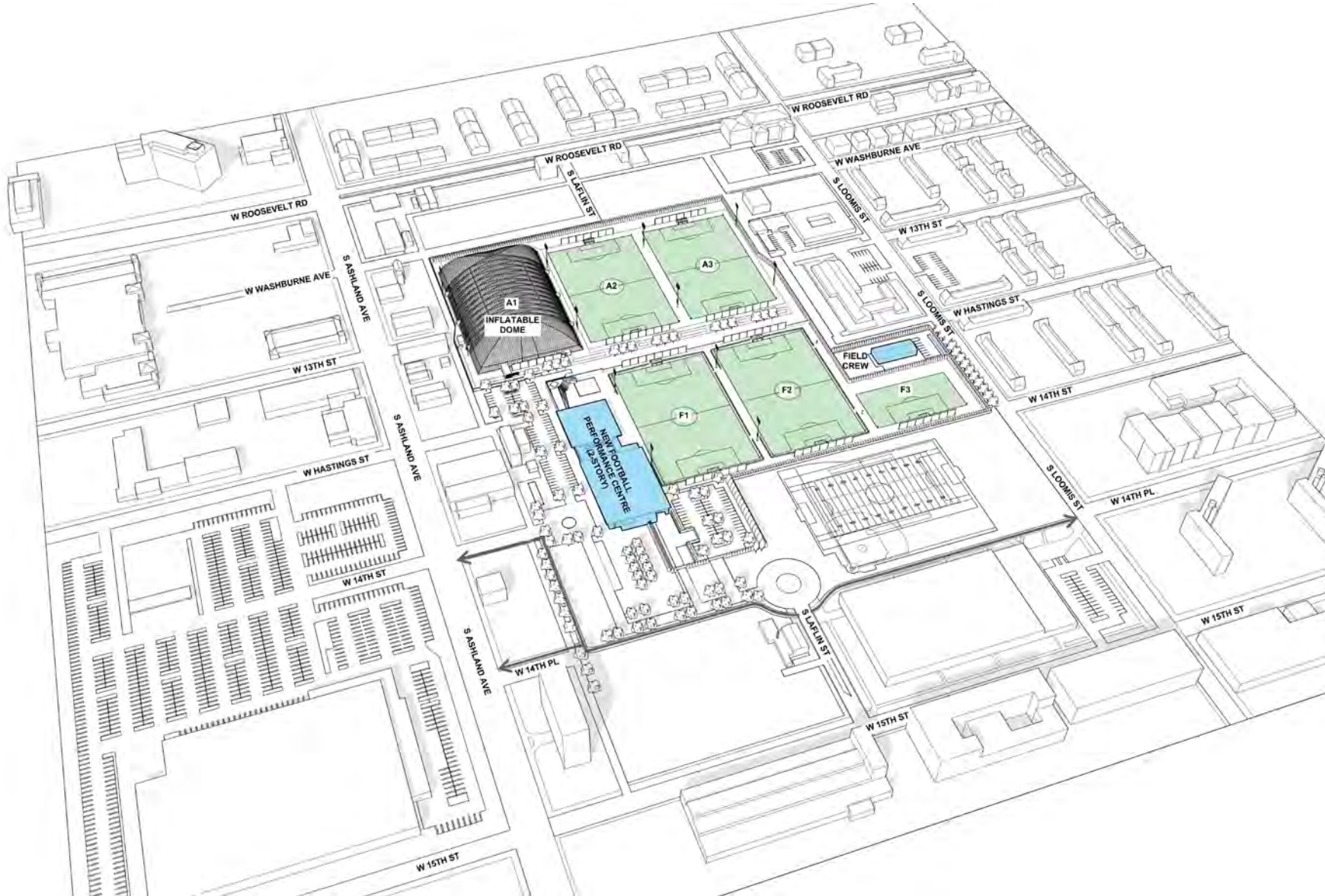
# LEGEND



- A. Existing Community Garden
- B. Jane Addams Family Resource Center
- C. Pedestrian Corridor
- D. CHA Developable Land
- E. New Soccer Performance Center
- F. New Field Crew Building
- G. William Jones Apartments (Senior Living)
- H. Improved Resident Parking/Outdoor Use
- I. Jane Addams Recreation Center
- J. Bethel Mennonite Community Church



# PROGRAM SITE



training facility **51,600** gsf

2 stories

**5.5** pitches \* includes field lighting  
\*\* includes field lighting & hydronic heat

- \*\* First team - 2.5 hybrid grass
- \* Academy - 3 synthetic turf
- \* Seasonal Academy Dome over A1 synthetic turf (Nov-Mar)

field crew **4,100** gsf



# COMMUNITY INVESTMENT



ABLA Fun Day (Back to School)



Local Youth Soccer Programming



Basketball Court / Mini Pitch



Community Internship Program





# PEDESTRIAN CORRIDOR RENDERINGS



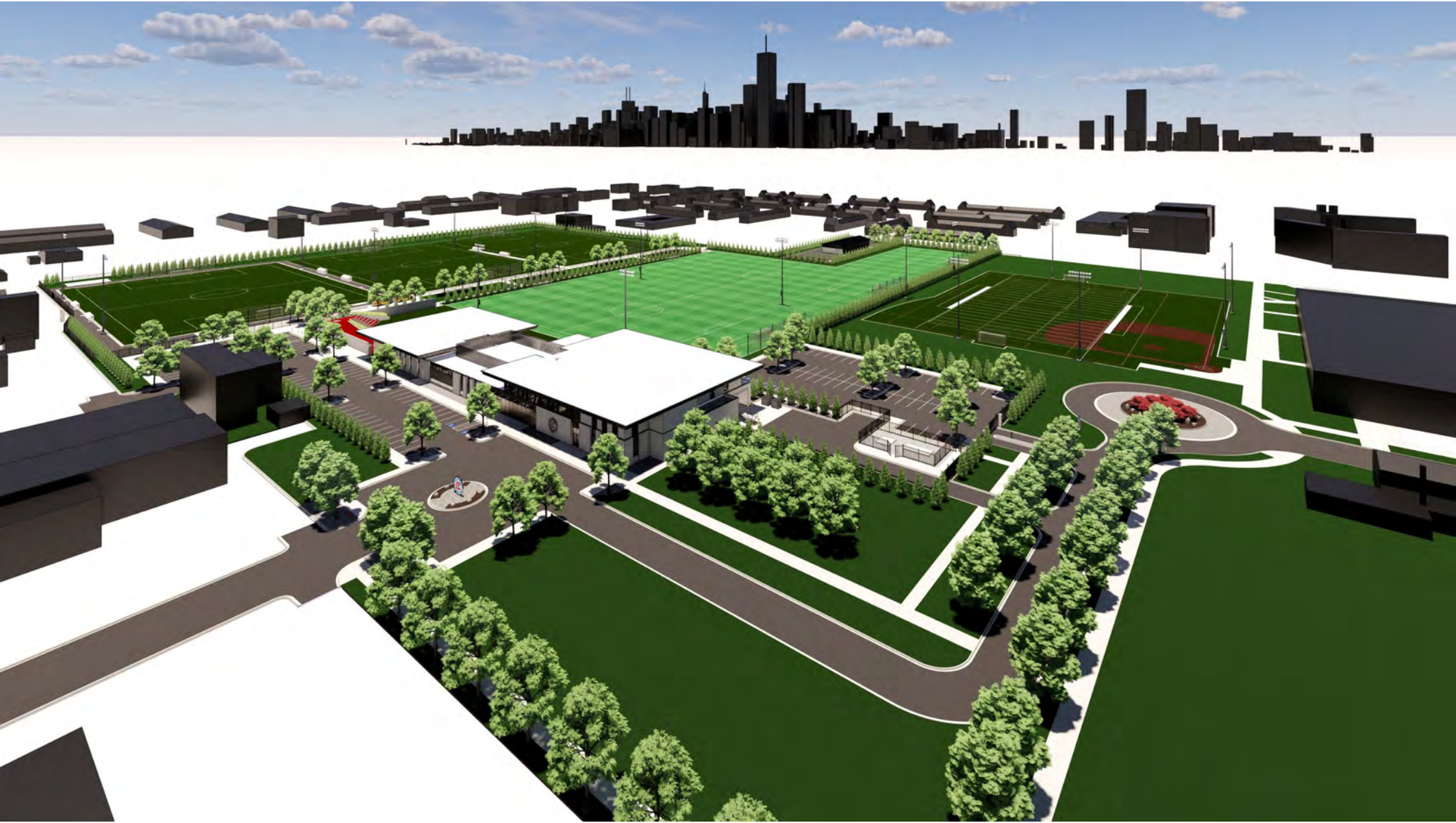
# PERFORMANCE CENTER ELEVATION



# PERFORMANCE CENTER ELEVATION



# SITE AERIAL RENDERING





Chicago Fire Football Club  
Project Lead



Jones Lang LaSalle  
Project Manager



Crawford Architects  
Project Architect



# Question & Answer Session

# Next Steps

## Anticipated timeline for City hearings:

1. Chicago Plan Commission: 9/15/22
2. Committee on Zoning: 9/20/22
3. City Council: 9/21/22

## For further inquiries related to this project, please contact:

Brian Hacker

Planner V, West Region

[brian.hacker@cityofchicago.org](mailto:brian.hacker@cityofchicago.org)

312-744-7217



# Chicago Fire Performance Centre Proposed Development

DPD/28<sup>th</sup> Ward Community Meeting  
August 25<sup>th</sup>, 2022