

The Hartigan Beach Dune site is a small half-acre lakefront property located at the end of Albion Street in Rogers Park just north of Loyola University and Hartigan Park. It represents the last remaining privately-owned undeveloped piece of property on the lakefront. At this time the City is pursuing the acquisition of this property consistent with the Chicago Lakefront Plan to expand and create a contiguous publicly owned lakefront park system.

The site is currently used for surface parking. Of significance is that records indicate no past history of any residential, commercial, or industrial structures built on this site. On its east end

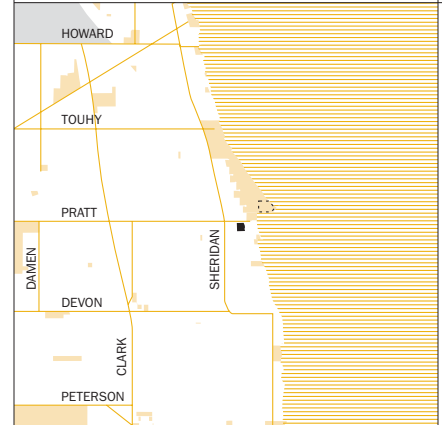
between the parking lot and the beach lies an old revetment wall previously constructed by the U.S. Army Corps of Engineers for beach protection.

Preliminary plans for this site include integrating it with the adjacent Chicago Park District Hartigan Beach Park by preserving the beachfront, extending the existing paths, seating, and creating dune habitat and an open grove.

*Added to Chicago Nature Areas Directory after Plan approval by Chicago Plan Commission on February 16, 2006.*

HARTIGAN BEACH DUNE

Site No 80

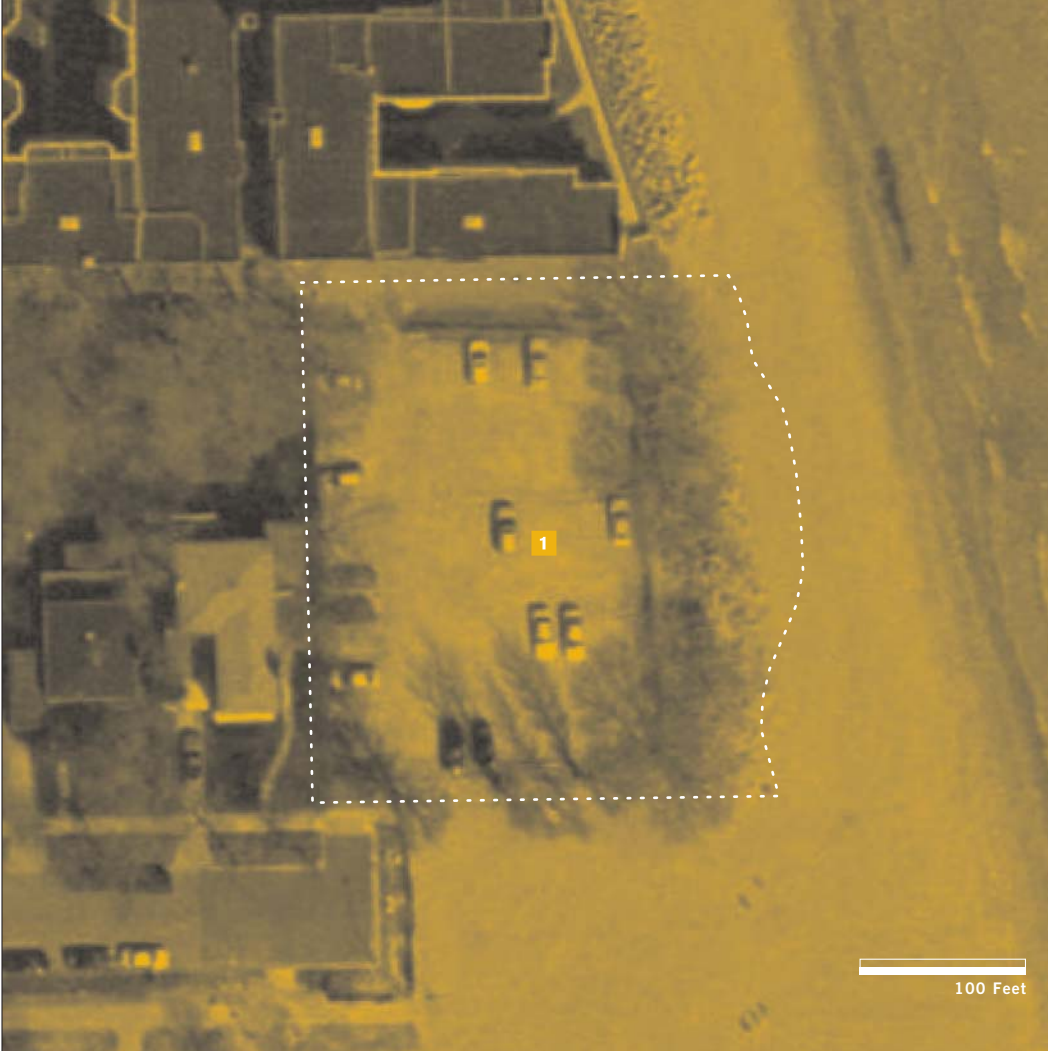


6600 NORTH / 1000 WEST



Hartigan Beach Dune

N: 80



ADDRESS 1030 W Albion Ave  
 OWNER CorLands  
 ACREAGE 0.52

HABITATS  
**1** Potential Habitat

DIRECTIONS When traveling north on Sheridan Rd, turn right (east) on Albion Ave; park along the street. The site is immediately north of the street end.

Hartigan Beach Dune

Chicago Habitat Directory 2005

Page 129