



Protecting Chicago: Phase IV Re-Opening Metrics Update

June 11th, 2021

(Data current through 6/9/2021)



COVID-19 Outcomes by Race/Ethnicity and Geography

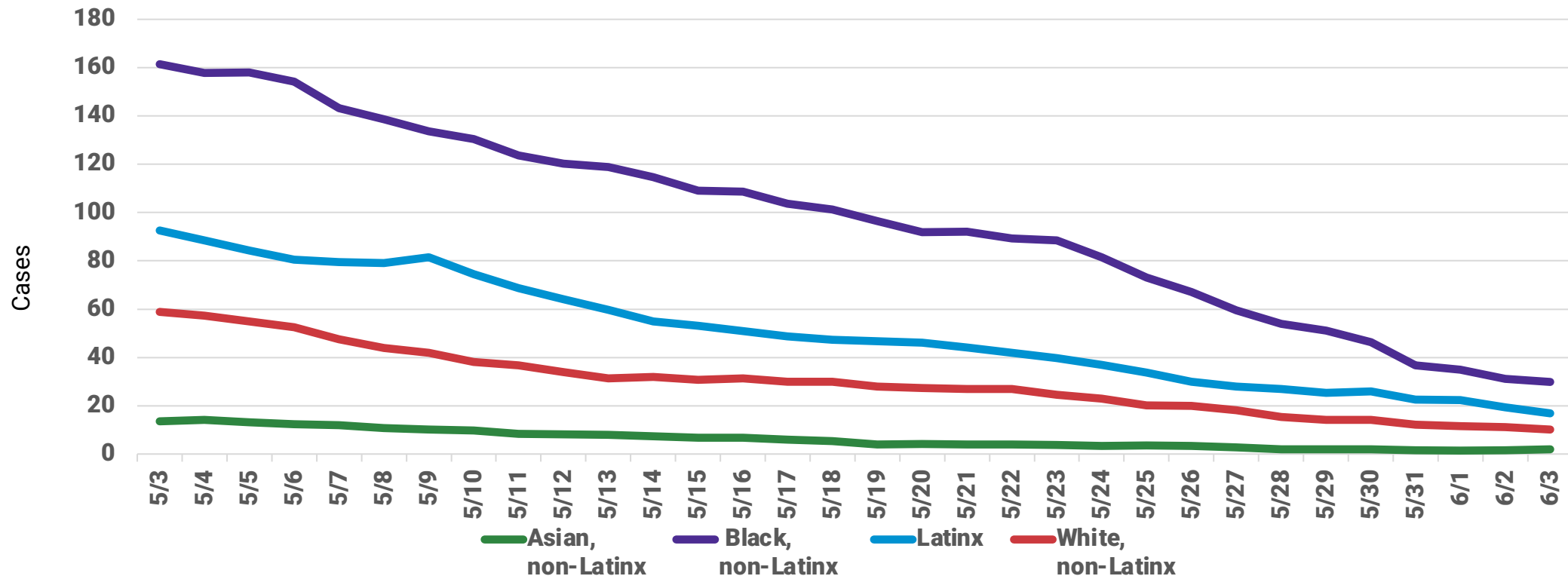


Diagnosed Cases

Incident cases are highest for Black, non-Latinx Chicagoans. All groups are declining and differences are shrinking.



COVID-19 Cases, on Specimen Date, by Race/Ethnicity, rolling 7-day average



Daily COVID-19 cases with known specimen report date and race/ethnicity information. Case is defined as positive result on PCR or antigen test. This case definition was applied to the entire epidemic beginning on 2/8/2021 therefore these results are different from results reported prior. Source: INEDSS.

Weekly changes in COVID-19 cases by race/ethnicity and age group for week ending June 5th (comparisons to week ending May 29th)



Age Group (years)	Latinx	% of Age grp	Change from last week	Black, NL	% of Age grp	Change from last week	White, NL	% of Age grp	Change from last week	Asian, NL	% of Age grp	Change from last week	Total (percent)	Change from last week
0-17	49	41%	-42	43	36%	-63	18	15%	-7	2	2%	-3	168 (18%)	-156
18-44	105	29%	-65	191	52%	-134	41	11%	-73	12	3%	-3	453 (48%)	-383
45-64	36	19%	-21	108	58%	-70	34	18%	-24	1	1%	-6	225 (24%)	-160
65+	12	13%	-2	48	53%	-13	24	27%	-1	3	3%	-3	98 (10%)	-34
Total	202	27%	-130	390	51%	-280	117	15%	-105	18	2%	-15	944	-733

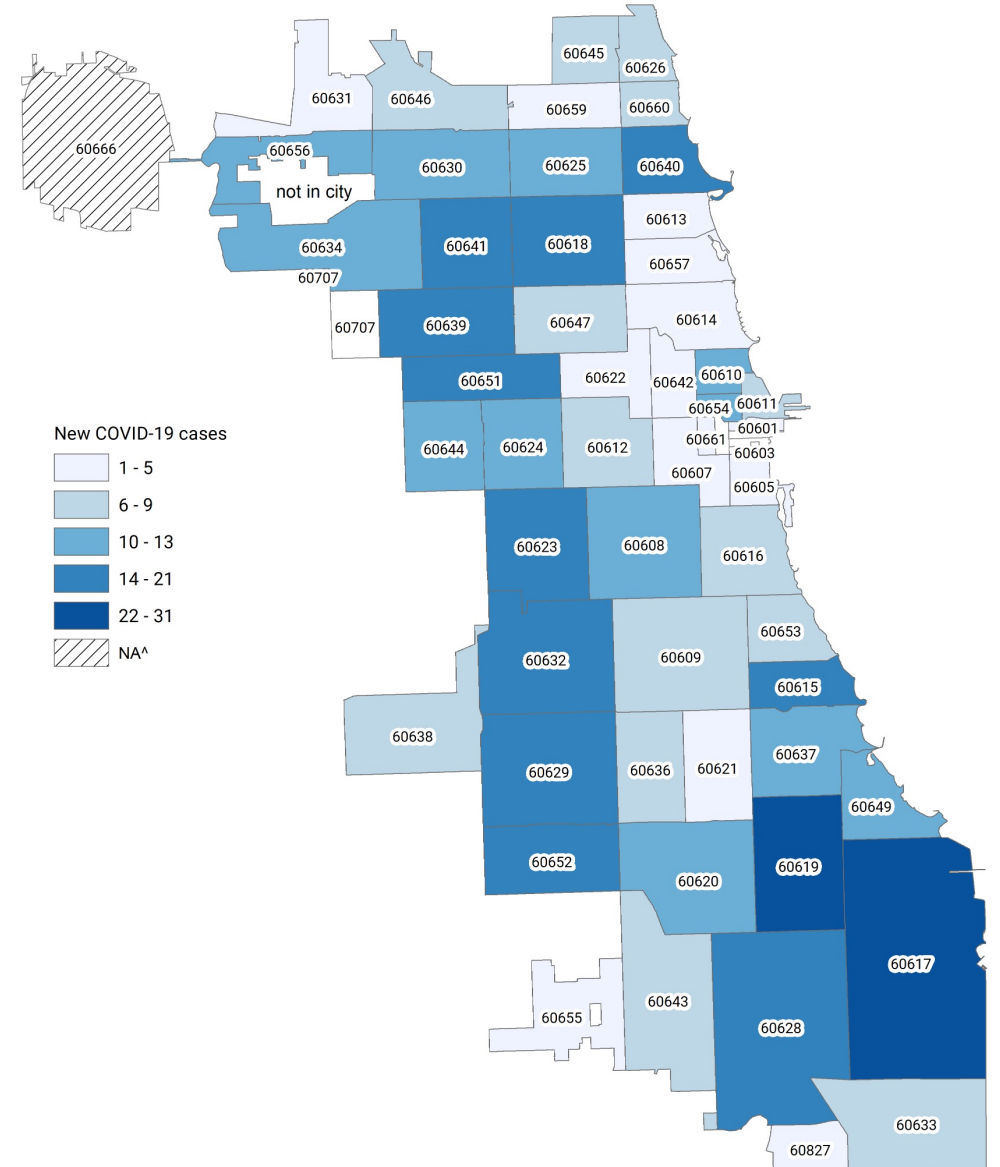
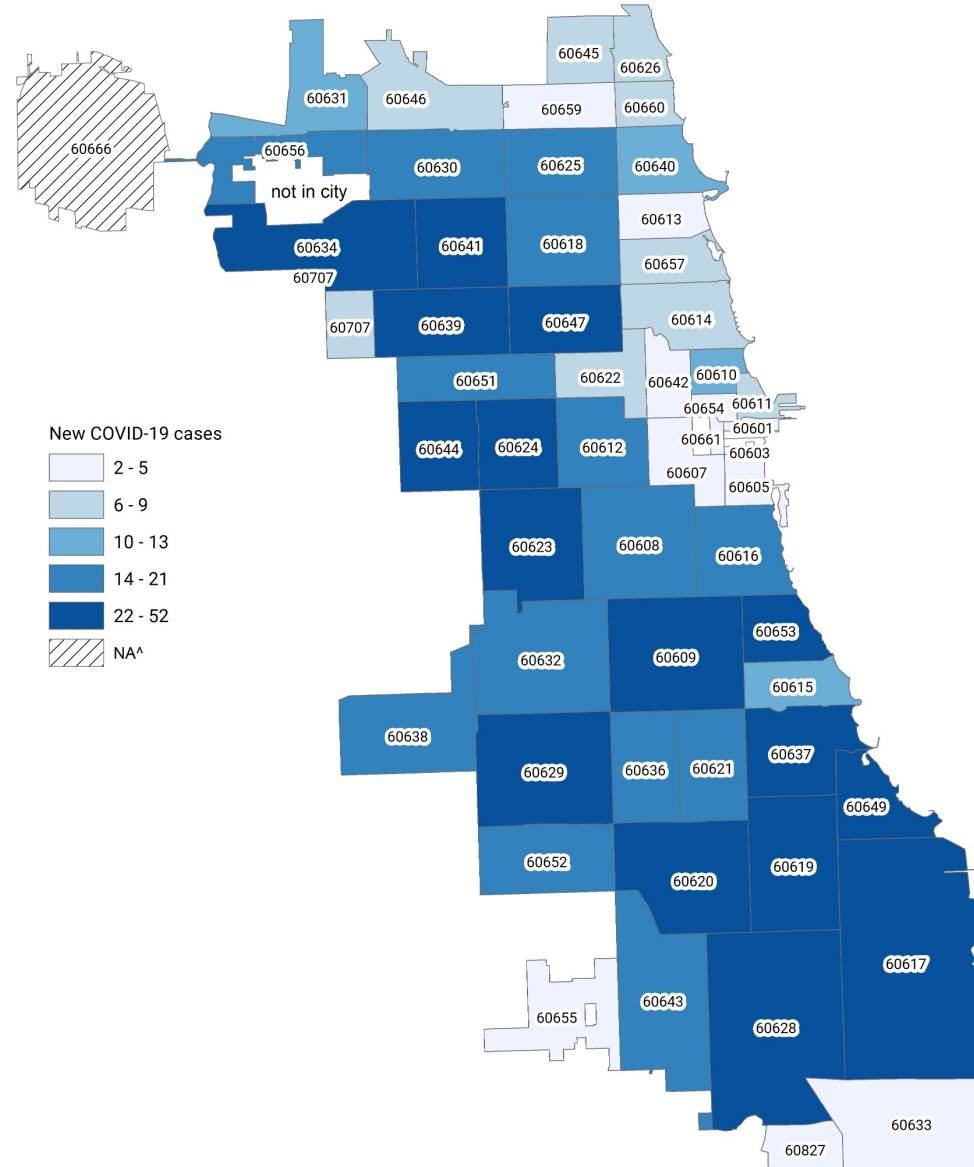
Percentages are computed using confirmed COVID-19 cases with known race/ethnicity.

Data pulled Wednesday 6/9/21

Changes in weekly case counts by zip code

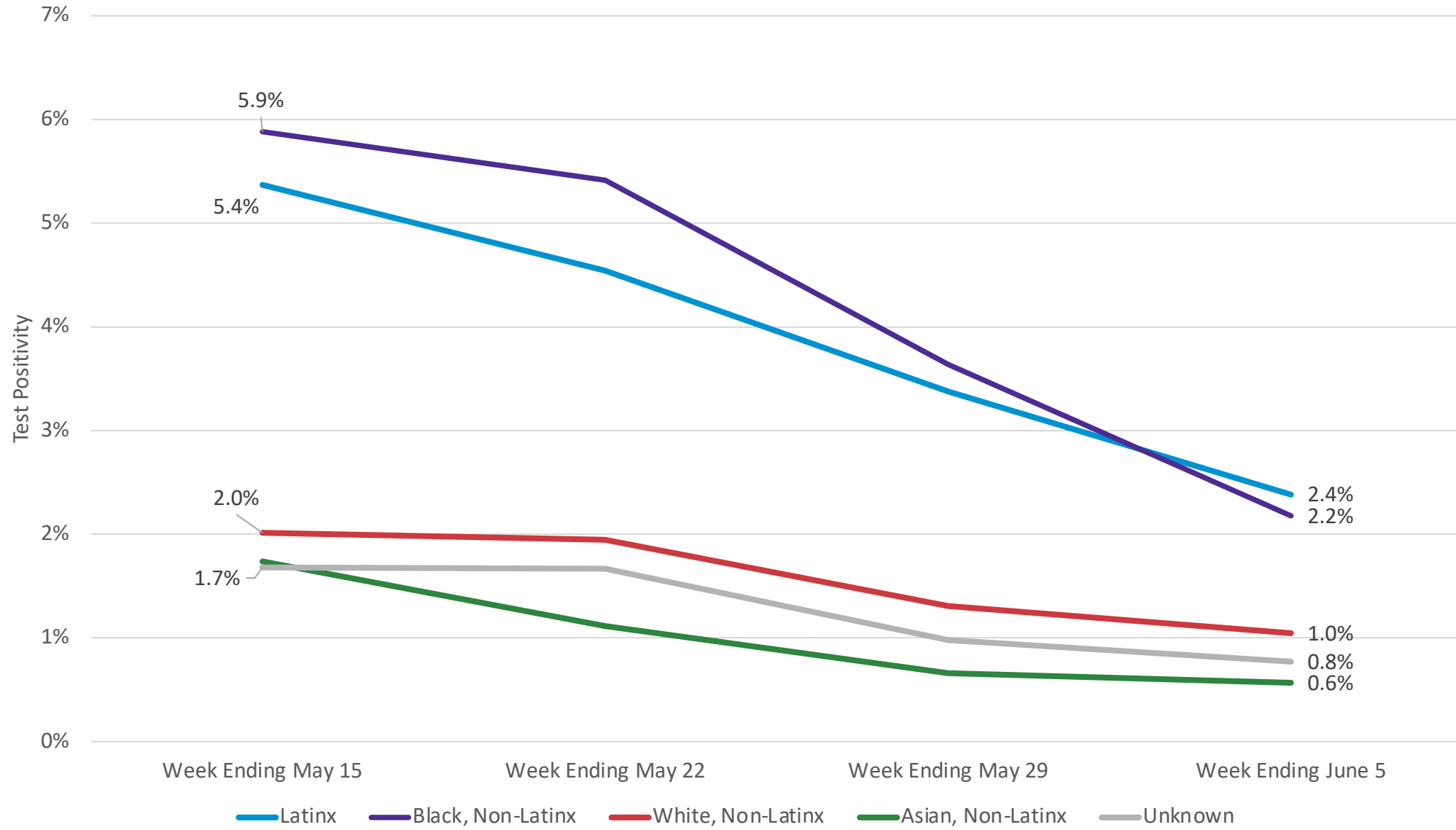
Week ending 5/29/21 (n=944)

Week ending 6/5/21 (n=551)



Note: Week is data through the Wednesday after the end date for the week. Week 22 June 5th and week 21 ending May 29th

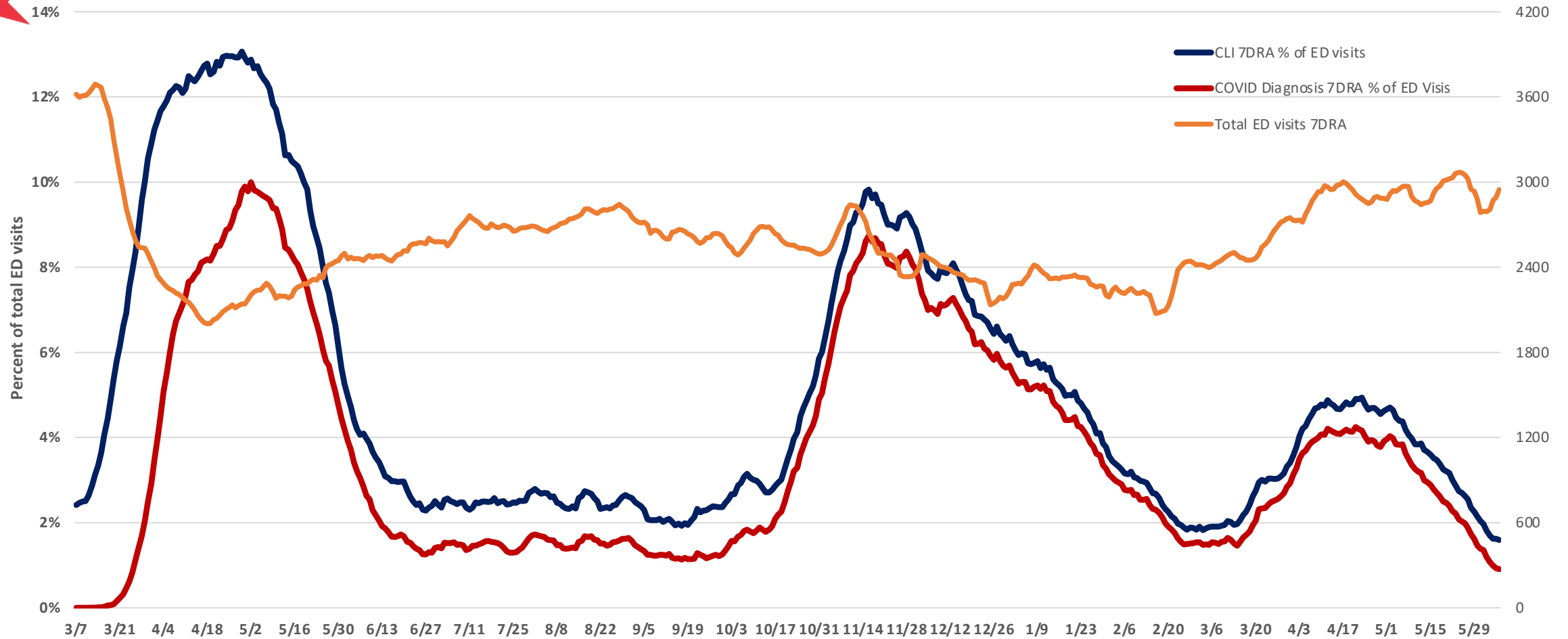
Test positivity by Race-Ethnicity (May 9 – June 5, 2021)





Emergency Department Visits

Cumulative epidemic CLI and COVID Diagnosis percentage of ED visits and total ED visits.



Percent of all emergency department visits, reported with COVID-like symptoms among Chicago residents.
Data Source: Illinois Hospital Emergency Departments reporting to CDPH through the National Syndromic Surveillance Project.



Hospital admissions

COVID-19 hospitalizations, entire epidemic with table.



COVID-19 Hospital admissions, rolling 7-day average



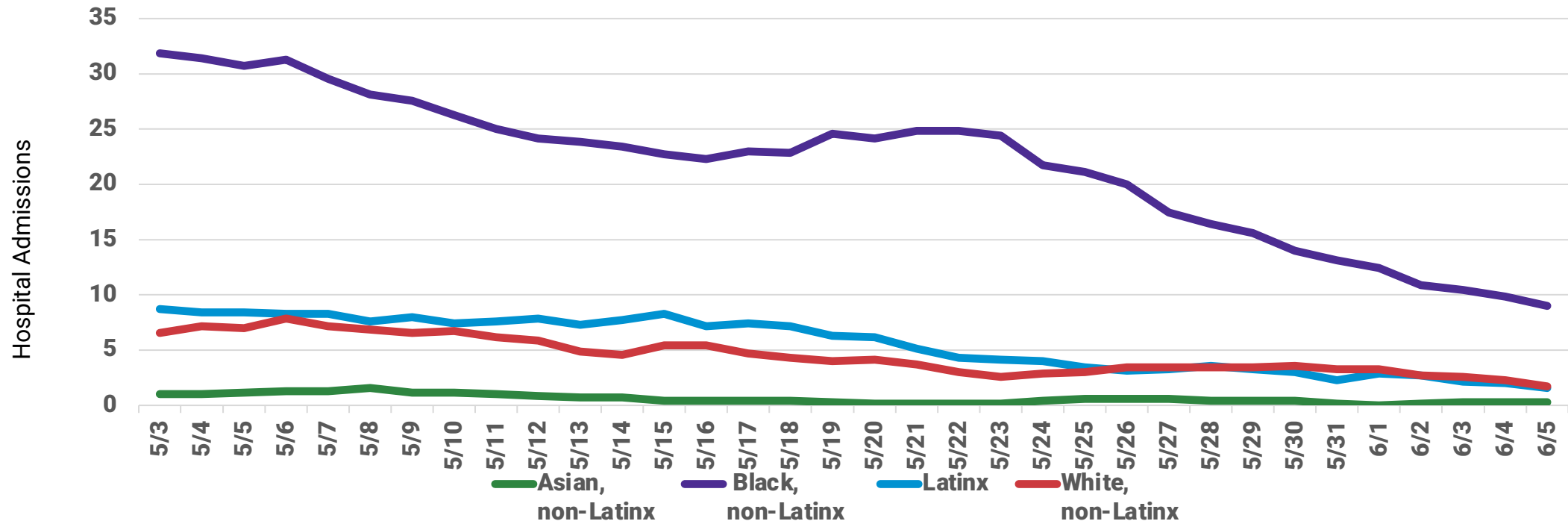
Month	Year	Hospital Admits frequency	Cumulative frequency
March	2020	1,653	1,653
April	2020	4,860	6,513
May	2020	3,250	9,763
June	2020	966	10,729
July	2020	763	11,492
August	2020	785	12,277
September	2020	752	13,029
October	2020	1,743	14,772
November	2020	3,735	18,507
December	2020	2,998	21,505
January	2021	2,064	23,569
February	2021	979	24,548
March	2021	986	25,534
April	2021	1,652	27,186
May	2021	1,127	28,313

Hospitalizations are reported to CDPH by hospitals into I-NEDSS and ESSENCE and self-reported by patients via an online survey. Daily counts for most recent dates displayed are likely incomplete. Cases who are not indicated to have been hospitalized across any of the three data sources are assumed to not have been hospitalized. Six records with hospital admit dates from January and February 2020 are excluded from this chart. Peak daily admissions based on rolling 7-day average.

Daily COVID-19 hospital admissions are highest and declining fastest for Black, non-Latinx Chicagoans.



COVID-19 Hospital Admissions, by Race/Ethnicity, rolling 7-day average, first known hospital admit date



Hospitalizations are reported to CDPH by hospitals into I-NEDSS and ESSENCE and self-reported by patients via an online survey. Daily counts for most recent dates displayed are likely incomplete. Cases who are not indicated to have been hospitalized across any of the three data sources are assumed to not have been hospitalized. Six records with hospital admit dates from January and February 2020 are excluded from this chart. Peak daily admissions based on rolling 7-day average.

Recent COVID-19 hospitalizations by race/ethnicity and age group (May 23– Jun 5, 2021)

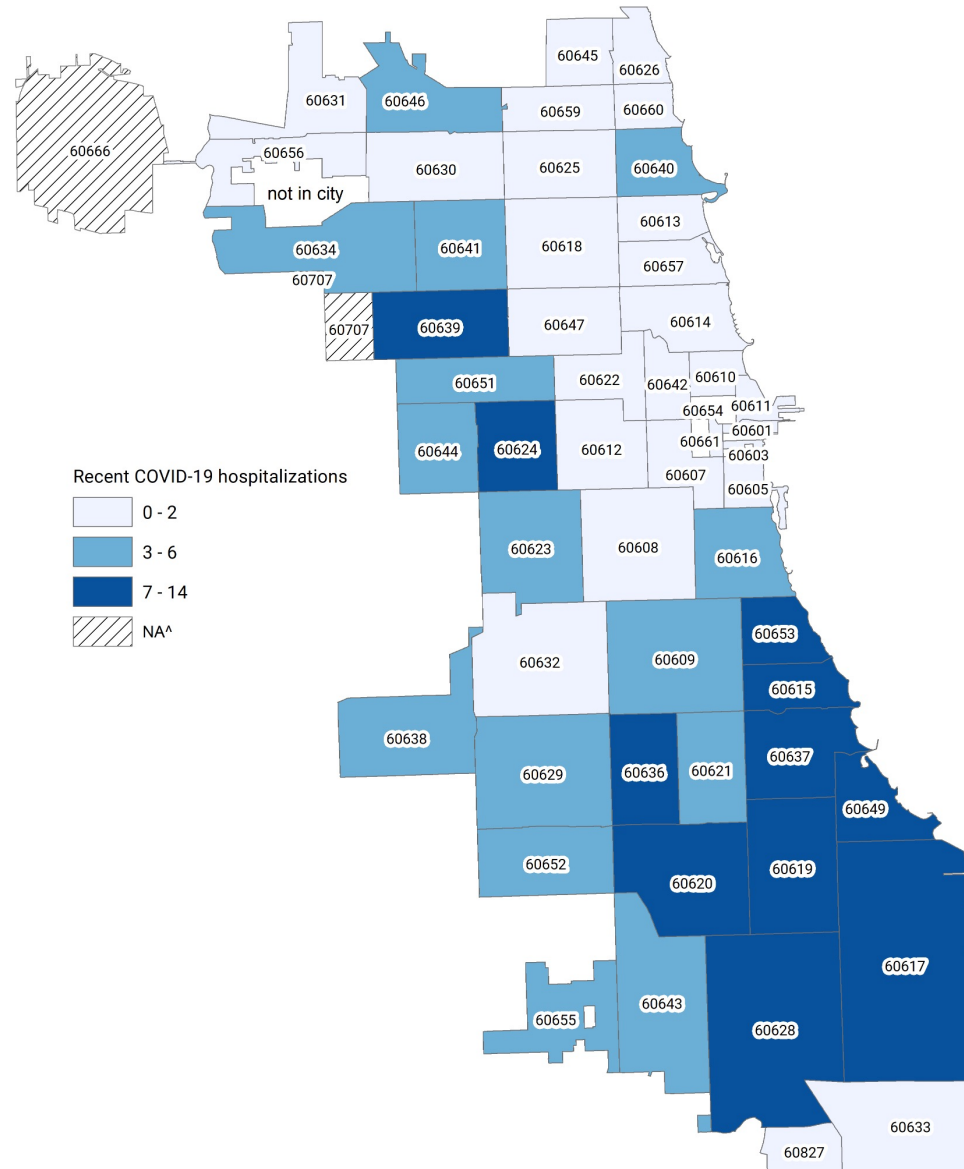


Age Group (years)	Latinx	% of Age grp	Black, NL	% of Age grp	White, NL	% of Age grp	Asian, NL	% of Age grp	Total	Percent
0-17	4	40%	4	40%	1	10%	1	10%	10	5%
18-44	9	20%	33	72%	4	9%	0	0%	46	24%
45-64	5	7%	56	84%	5	7%	0	0%	69	37%
65+	5	8%	38	63%	12	20%	2	3%	63	34%
Total	23	13%	131	72%	22	12%	3	2%	188	

Percentages are computed using COVID-19 hospitalizations with known race/ethnicity.

Data pulled Wednesday 6/9/21

Recent COVID-19 hospitalizations by Chicago zip code (May 23–Jun 5, 2021) n=188



Please note that COVID-19 hospitalizations may have significant reporting delays

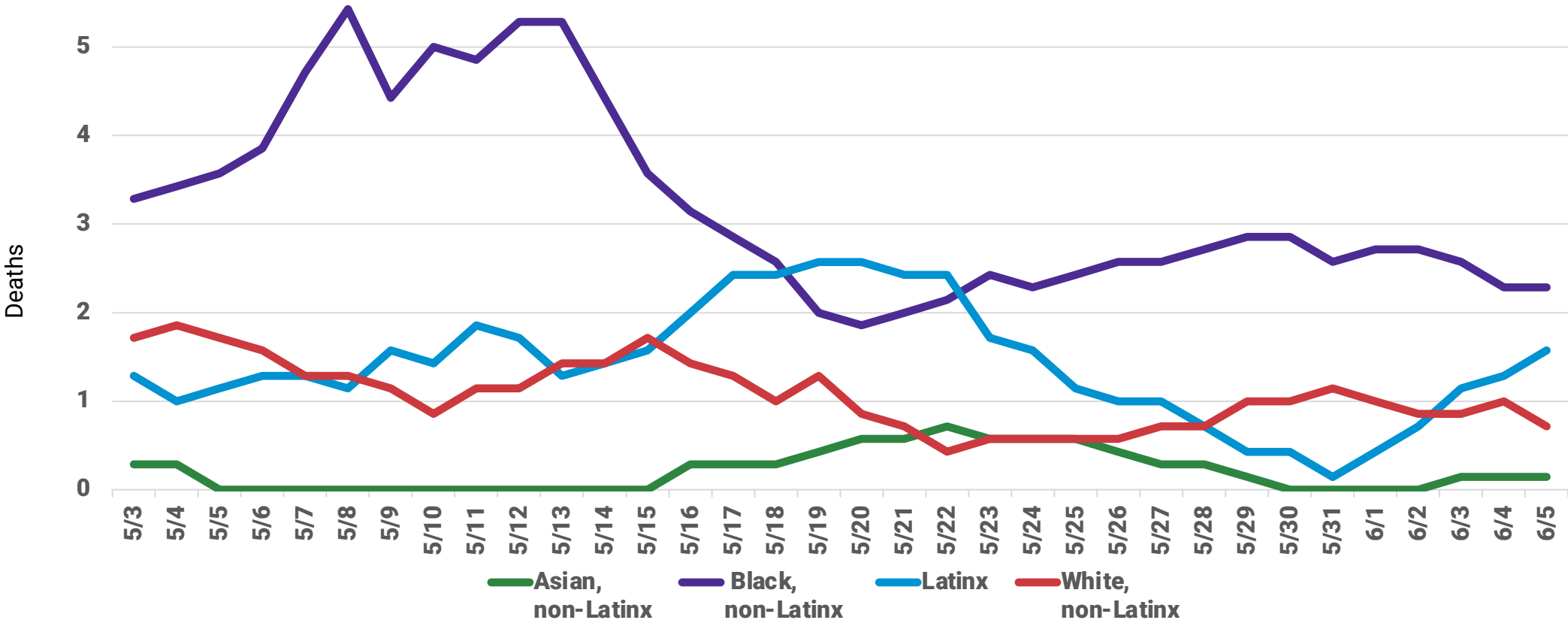


Deaths

Daily COVID-19 deaths were highest for Black, non-Latinx. Direction varies by Race/Ethnicity.



COVID-19 Deaths, by Race/Ethnicity, rolling 7-day average



Daily COVID-19 deaths reported for Chicago residents with known death date. Data source: INEDSS. A five day lag is imposed to reduce inaccuracy created by reporting delays.

Recent COVID-19 deaths (May 1st to Jun 8th) by race/ethnicity and age group



Age Group (years)	Latinx	% of Age grp	Black, NL	% of Age grp	White, NL	% of Age grp	Asian, NL	% of Age grp	Total	Percent
0-17	0	0%	1	100%	0	0%	0	0%	1	1%
18-44	3	50%	3	50%	0	0%	0	0%	6	5%
45-64	10	32%	18	58%	3	10%	0	0%	31	24%
65+	22	26%	44	52%	18	21%	5	6%	89	70%
Total	35	29%	66	54%	21	17%	5	4%	127	

Percentages are computed using COVID-19 deaths with known race/ethnicity.

Data pulled Wednesday 6/9/21

Recent COVID-19 deaths (May 1 to Jun 8, 2021) by Chicago zip code (n=127)

