

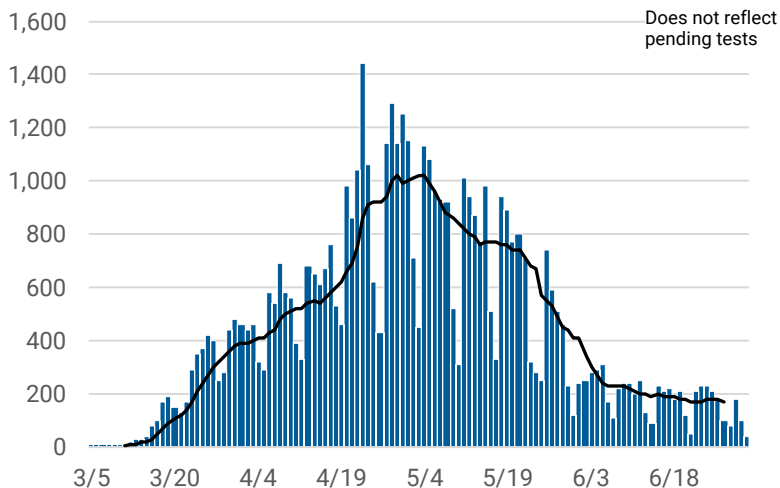


CHICAGO COVID-19 UPDATE

July 2, 2020

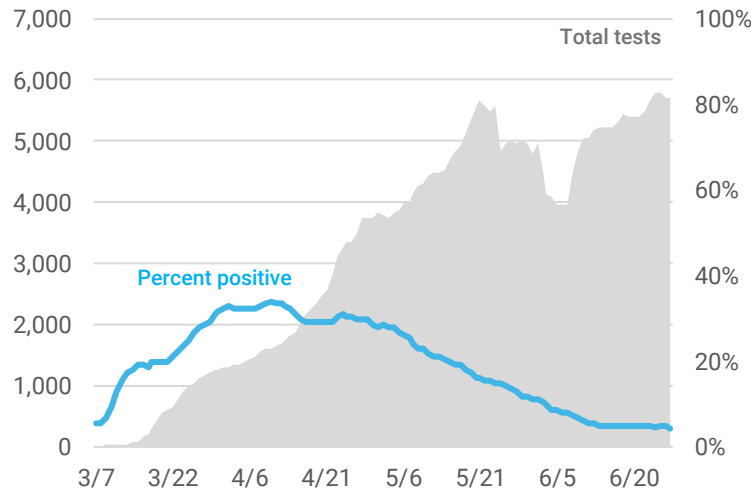
There are **52,813** cases of COVID-19 and **2,623** deaths among Chicago residents as of July 2, 2020. There are an average of **174** new cases and **8** deaths every day. An estimated **47,940** residents have recovered.¹

Confirmed daily COVID-19 cases and 7-day rolling average



Daily COVID-19 cases reported for Chicago residents with known specimen collection date. Results for several previous days are updated each day. Two cases with specimen collection dates prior to March 1, 2020 are not included in the graph.

COVID-19 testing and percent positivity, 7-day rolling average



Number of tests performed and percentage of tests that were positive averaged over 7 days. Includes molecular tests performed at state and private laboratories with known specimen collection date. Percent positivity is based on individuals tested. Tests performed between Jan 21 and Feb 29, 2020 are not included in graph. CDPH may not receive all non-positive results.

COVID-19 Case characteristics for Chicago residents

CHARACTERISTIC	NUMBER	% TOTAL CASES ²	RATE PER 100,000
Chicago	52,813	100%	1,951.7
Age			
0-17	2,560	4.9%	466.3
18-29	9,870	18.7%	1,785.0
30-39	9,372	17.7%	2,053.8
40-49	9,516	18.0%	2,828.3
50-59	8,940	16.9%	2,856.5
60-69	6,348	12.1%	2,413.8
70+	6,196	11.7%	2,633.0
Under investigation	11	0.0%	-
Gender			
Female	26,217	49.6%	1,891.4
Male	25,623	48.5%	1,941.3
Under investigation	973	1.8%	-
Race-ethnicity³			
Latinx	19,933	47.7%	2,566.5
Black, non-Latinx	12,393	29.7%	1,580.2
White, non-Latinx	6,095	14.6%	677.2
Asian, non-Latinx	1,145	2.7%	636.7
Other, non-Latinx	2,208	5.3%	1,848.2
Under investigation	11,039	20.9%	-

As of July 2, 2020, there have been **390,856** tests performed. The 7-day average is **5,695** tests per day, with a percent positivity of **4.6%**.

COVID-19 Morbidity and mortality by geography

GEOGRAPHY	CASES ²	DEATHS
Chicago	52,813	2,623
Suburban Cook County (IDPH)	38,548	1,986
Illinois (IDPH)	144,882	6,987
U.S. (CDC)	2,679,230	128,024
World (WHO)	10,533,779	512,842

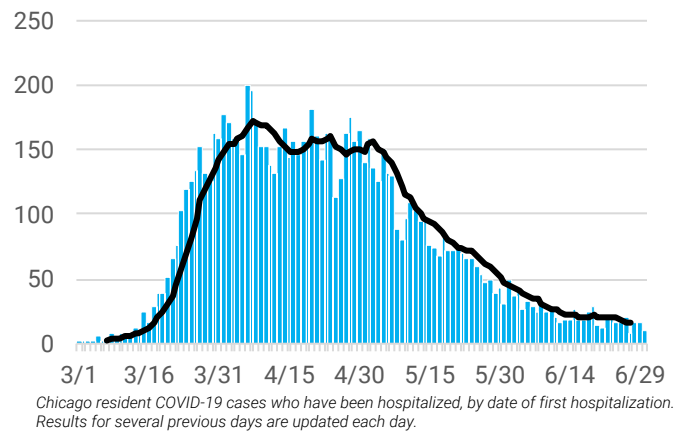
¹ Recovered is an estimate based on 14 days post diagnosis for people not hospitalized or 30 days post hospitalization for people hospitalized among those who have not died.
² Does not include persons with pending COVID-19 tests or persons with COVID-19 related illness who have not been tested.
³ Race-ethnicity percentage is calculated among those with known race-ethnicity as reported by the medical provider.

COVID-19 Death characteristics for Chicago residents

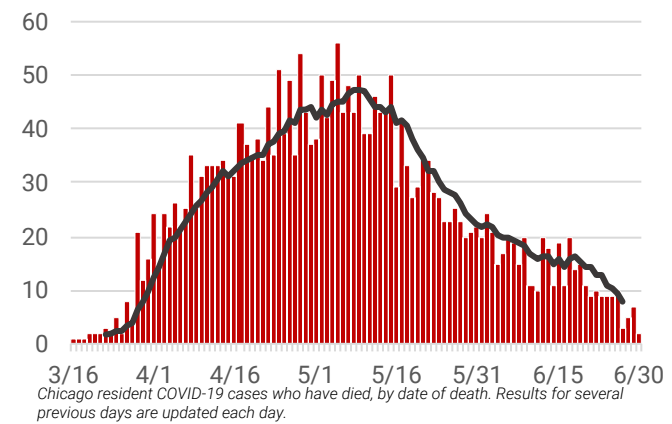
CHARACTERISTIC	DEATHS	% TOTAL DEATHS	% DEATHS WITHIN GROUP	RATE PER 100,000 POP
Chicago	2,623	100%	5.0%	96.9
Age				
0-17	2	0.1%	0.1%	0.4
18-29	18	0.7%	0.2%	3.3
30-39	65	2.5%	0.7%	14.2
40-49	141	5.4%	1.5%	41.9
50-59	288	11.0%	3.2%	92.0
60-69	570	21.7%	9.0%	216.7
70+	1,539	58.6%	24.8%	654.0
Gender				
Female	1,074	40.9%	4.1%	77.5
Male	1,549	59.1%	6.0%	117.4
Under investigation	0	0%	0%	-
Race-ethnicity³				
Latinx	838	32.1%	4.2%	107.9
Black, non-Latinx	1,135	43.4%	9.2%	144.7
White, non-Latinx	500	19.1%	8.2%	55.6
Asian, non-Latinx	119	4.6%	10.4%	66.2
Other, non-Latinx	22	0.8%	1.0%	18.4
Under investigation	9	0.3%	0.1%	-

³Race-ethnicity percentage is calculated among those with known race-ethnicity as reported by the medical provider.

Daily COVID-19 hospitalizations and 7-day rolling average

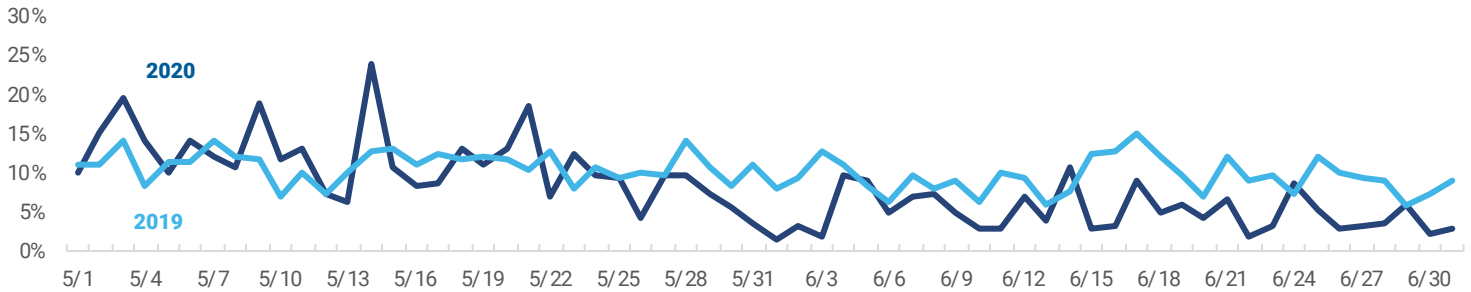


Daily COVID-19 deaths and 7-day rolling average



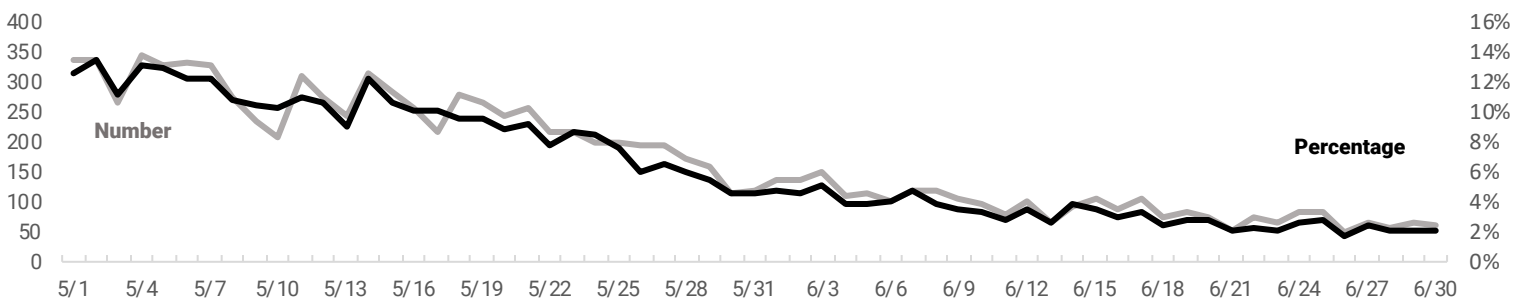
COVID-19 symptoms are similar to those of influenza, so monitoring influenza-like illness (ILI) may also help identify COVID-19. ILI activity in 2020 that is higher than what was experienced in 2019 could indicate the presence of COVID-19 in the community.

Percentage of daily emergency department (ED) visits due to influenza-like illness (ILI) in Chicago, 2020 vs. 2019



COVID-19-like illness (CLI) is a new tool used to help track trends in COVID-19 activity. An increase in the number and percentage of ER visits due to CLI could indicate an increase in COVID-19 activity in the community.

Number and percentage of daily emergency department (ED) visits due to COVID-19-like illness (CLI) in Chicago, 2020



Percentage of daily emergency department visits attributed to ILI and CLI for Chicago zip codes based on chief complaint submitted to ESSENCE.